

Dashboards



Consists of visual interactive status and performance information widgets

Overview

Manufacturing operations generate a lot of data. Being able to present the most important data in real time and in a visual way that is clear and easy to understand helps the different stakeholders to understand the current situation and quickly visualize any problem that requires attention.

A Dashboard is a highly visual mechanism to display different types of data. Dashboards are created by combining and configuring different widgets such as reports, queries, resource lists, charts.

The system comes off-the-shelf with the following set of widgets:

- Augmented Reality
- Barcode Identification
- BI Card
- Browser
- Button
- Column View
- Component Widget
- Data Series
- Data Value
- Date and Time
- EDC Chart
- Entity Attachments
- Entity Details
- Entity History
- Entity Info
- Entity KPI
- Entity List View
- Entity Tiles
- FabLive
- Filter
- Flex
- Form
- Grafana®
- Grid
- Keypad
- Live Data
- Query
- Shift
- Sliding Grid
- SPC Chart
- Tabs Widget
- Text
- Tiles Matrix
- Timeline Chart
- Timer
- Transfer Widget
- Tree Map Chart
- UI Page

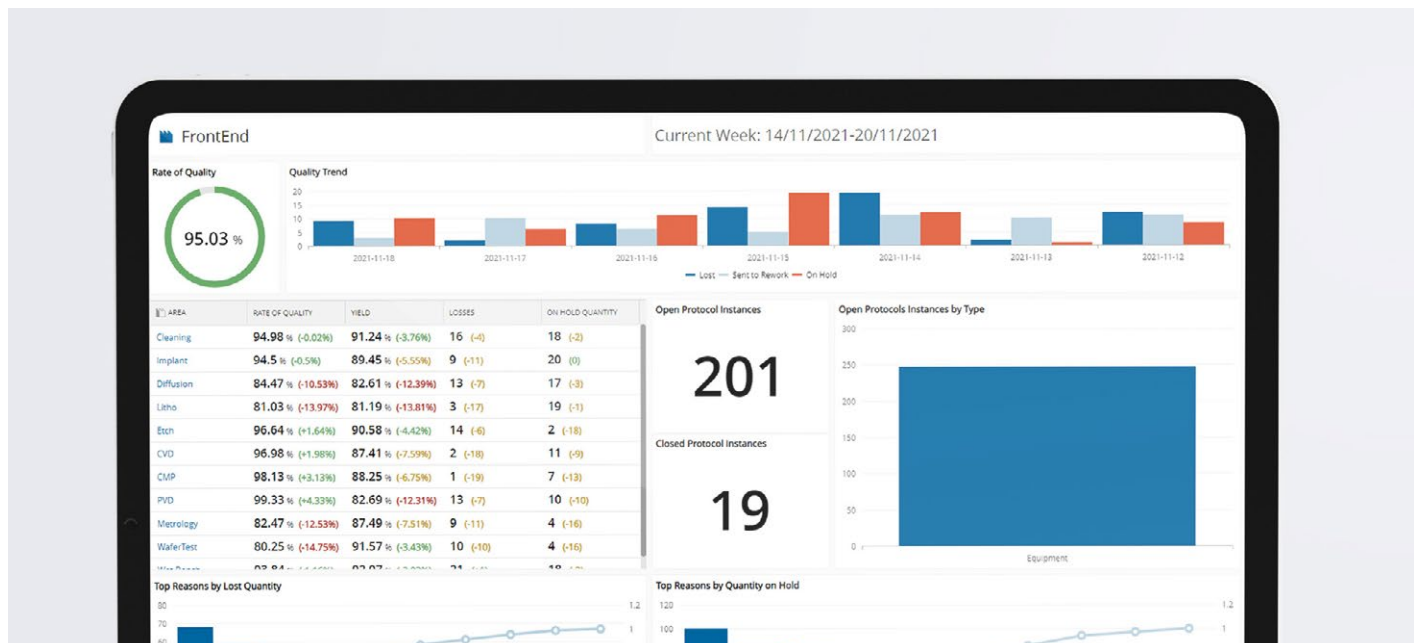


Figure 1 Dashboard example 1



Critical
manufacturing 10.2

Disclaimer · The information contained in this document represents the current view of Critical Manufacturing on the issues discussed as of the date of publication. Because Critical Manufacturing must respond to changing market conditions, it should not be interpreted to be a commitment on the part of Critical Manufacturing, and Critical Manufacturing cannot guarantee the accuracy of any information presented after the date of publication. This document is for informational purposes only. Critical Manufacturing makes no warranties, express, implied or statutory, as to the information herein contained.

contact@criticalmanufacturing.com · www.criticalmanufacturing.com

Key Features

- Responsive design with support for different layouts (e.g.: desktop, mobile phone).
- Easy creation and configuration by power users without coding, which enables the creation of optimized Dashboards and GUIs for some specific operational scenarios.
- Capability to define a Dashboard as the homepage for any user.
- Capability to create and add new widgets to the framework.
- Extensive library of widgets out of the box.
- Capability of widgets to communicate and interact with each other so that an event in one widget can trigger an update in another.

Benefits

- Increased operational efficiency
- Increased visibility and monitoring

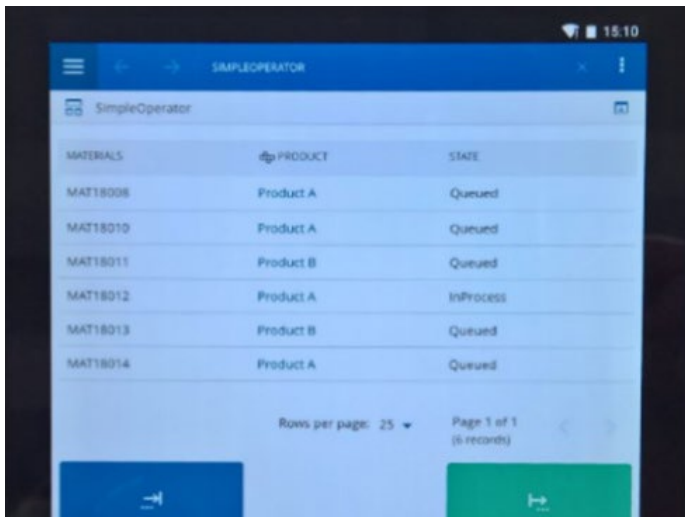


Figure 2 Custom operator GUIs created with the UI Page designer

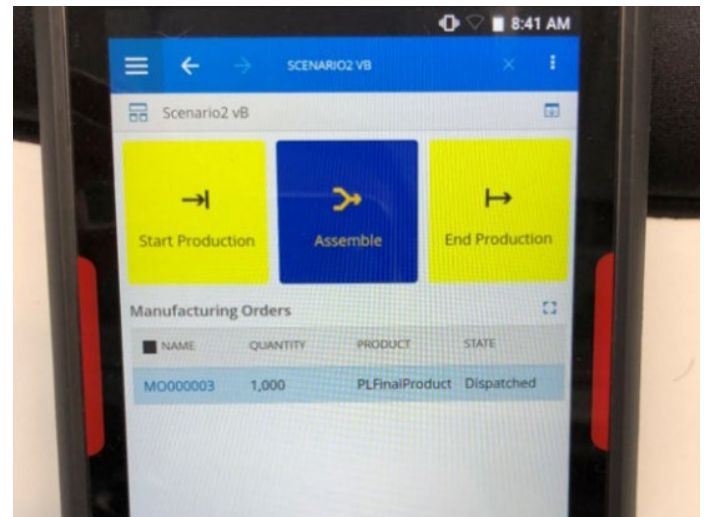


Figure 3 Custom operator GUIs created with the UI Page designer



Figure 4 Embedded Grafana® Dashboard using the Grafana® widget

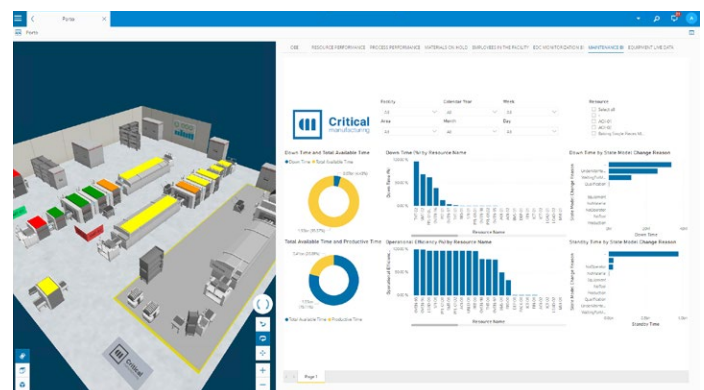


Figure 5 Custom production dashboard